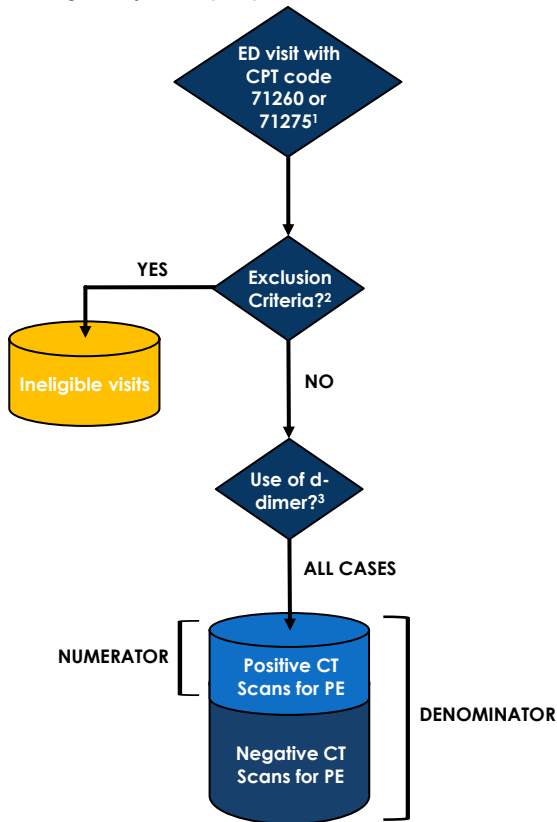


MEDIC
Adult Suspected Pulmonary Embolism CT Measure Specification Flow Diagram
Ages ≥ 18 years old (adult)



¹ ED visits with an associated CPT code of 71260 (CT chest with IV contrast) or 71275 (CT chest angiogram)

² Abstractor denominator exclusions:

- Pregnancy
- CT scan not ordered by emergency physician
- CT scan not performed for evaluation of pulmonary embolism

³ Abstracted information from chart.

$$\% \text{ positive PE CT scans} = \frac{\# \text{ positive PE CT scans}}{\# \text{ eligible cases w/ PE CT scans}}$$

Suspected Pulmonary Embolism CT Diagnostic Yield Measure:

Quality initiative measure reported as: PE CT scan diagnostic yield

Numerator = PE CT scans (CPT codes 71260 or 71275) that are positive for acute pulmonary embolism

Denominator = ED visits with eligible PE CT scans (CPT codes 71260 or 71275) after exclusions applied